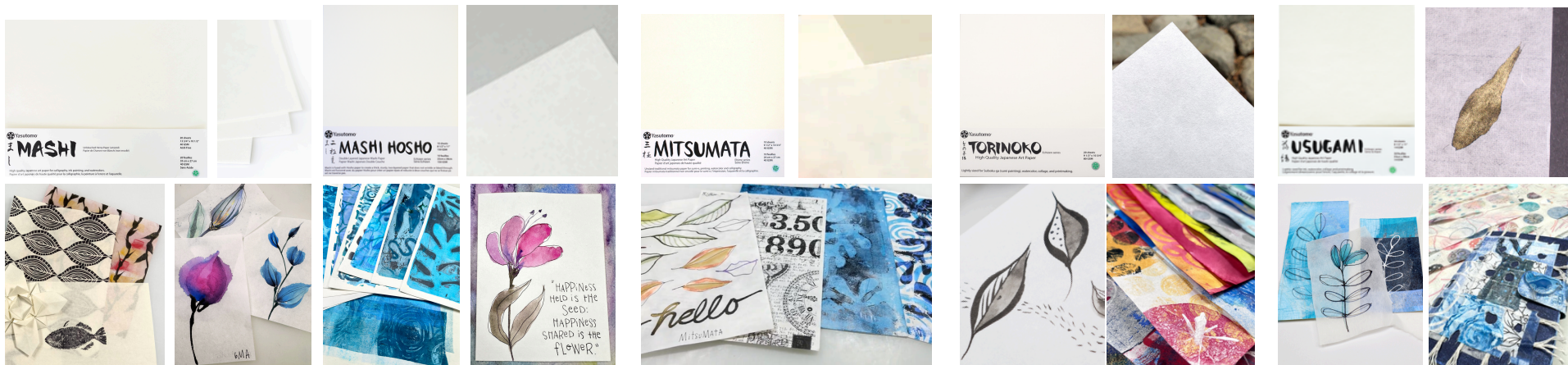
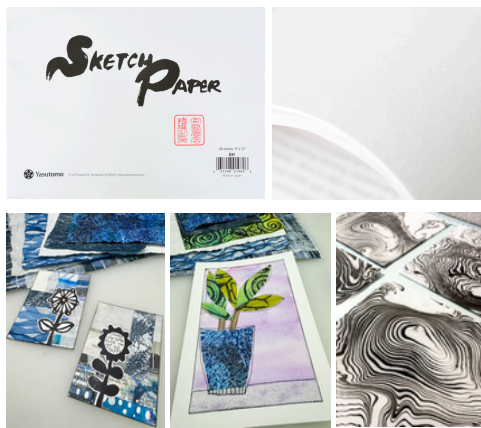




Name/SKU	Asagami (6AG)	Gampi (6GAM)	Gasen (6G)	Hanshi (6A/6E)	Kozo (6K)
Specs	20 sheets / 9 1/2" x 10 3/4" Not acid-free / Neutral sizing / 43 GSM	10 sheets / 9 1/2" x 10 3/4" Not acid-free / Not sized / 40 GSM	10 sheets / 9 1/2" x 10 3/4" Not acid-free / Lightly sized / 82 GSM	500 100 sheets / 9 1/2" x 13" Thin tissue paper acts like more expensive papers, great for student practice	10 sheets / 13 3/4" x 10 1/2" Not acid-free / Not sized / 58 GSM
Characteristics	Crisp feeling paper with a smooth finish	Silky smooth, warm-toned. Beautiful sheen. Not sized, but performs like it is.	Soft and resilient, lightly sized to capture finer details in your work.	Calligraphy and sumi-e practice; mixed-media; collage	Absorbent, soft, yellow hued. Made of 100% mulberry (kozo)
Uses	Woodblock printing, monoprinting, inkjet & laser printing, stamping, mixed media, copy paper, watercolor, gansai, sumi-e, origami, encaustic	Sumi-e, gansai, watercolor, ink printing, calligraphy, rubbing, drawing, printmaking, collage, mixed media, origami, encaustic	Ink painting, watercolor, gansai, suminagashi (Japanese marbling), calligraphy and block printing		Sumi-e, gansai watercolor painting, conservation and repair, techniques, stamping, momigami (Japanese kneaded paper), encaustic
Best for	Printing techniques, monoprinting, cyanotype	Watercolor, ink painting	Gansai, sumi-e, suminagashi, momigami	Calligraphy and sumi-e practice paper. Customized tissue paper/gift wrap.	Woodblock printing, stamping, momigami (Japanese kneaded paper)



Name/SKU	Mashi Paper (6MA)	Mashi Hoshho (6MAH)	Mitsumata (6MIT)	Torinoko (6T)	Usugami (6U)
Specs	20 sheets / 13 3/4" x 10 1/2" Acid-free / Not sized / 40 GSM	10 sheets / 8 1/2" x 11" Not acid-free / Sized / 150 GSM	10 sheets / 9 1/2" x 10 3/4" Not acid-free / Not sized / 40 GSM	20 sheets / 9 1/2" x 10 3/4" Not acid-free / Lightly sized / 80 GSM	30 sheets / 8.5" x 11" Not acid-free / Sized / 14 GSM
Characteristics	Fluffy, absorbent, takes lots of ink and captures brush marks very clearly.	Thick, sturdy, 2-layered. Does not wrinkle or bleed. Allows fine detail in ink & color.	Strong, smooth, warm-toned. Short-fibered mitsumata, naturally insect-repellant.	Sturdy, incredibly versatile. Holds up well to watercolor washes with minimal wrinkling. Lightly sized to allow for finer detail in various techniques. Watercolor floats on the surface instead of sinks right in.	Strong, translucent tissue paper sized to allow for finer detail in ink, watercolor, monoprinting and laser printing. Tears nicely, remains strong when wet, dries translucent making it great for collage and paper crafting
Uses	Calligraphy, ink painting, watercolors, mixed media, monoprinting, momigami (Japanese kneaded paper), stamping, encaustic	Gansai watercolors, calligraphy, sumi painting, ink work, Western watercolors, pencil, acrylic paint, gouache, stamping, block printing and more.	Sumi-e, gansai, watercolor, ink printing, calligraphy, rubbing, drawing, printmaking, gel printing, collage, and mixed media, encaustic	Ink painting, gansai watercolor, Western watercolor, cyanotype, Chigiri-e (Japanese collage), printmaking, markers, encaustic	Ink painting, watercolor, printmaking, collage, monoprinting and laser printing, paper crafting
Best for	Gansai & sumi-e if soft diffused color spread is desired, paper crafting	Card making, inkjet printing (sheet size compatible with printers), cyanotype	Gel printing, ink painting, origami, and paper crafts	Watercolor on sized washi paper. Mixed media. Gel printing.	Printed images to be used for mixed media paper crafts and collage



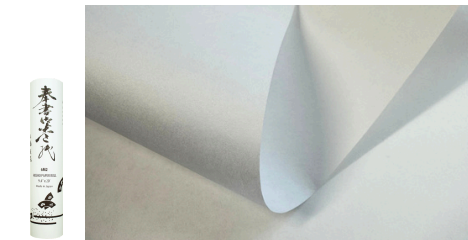
Name/SKU Hosho Paper Sketch Pad (6H)
Specs 48 sheet pad / 9" x 12" / 70 GSM
 Not acid-free / Not sized
Characteristics Thick, strong, fluffy. Strong enough to hold up to a variety of art processes. Sturdy. Versatile.
Uses Sumi-e, calligraphy, ink, gansai, lettering, sketching, rubbings, printmaking (block printing, gel printing, monoprinting), Suminagashi, Momigami, laser printing, official documents, origami, paper crafts.
Best for Best multipurpose paper for various applications, particularly gel printing and suminagashi.



Name/SKU Washi Paper Pad, 12" x 18" (6JM)
Specs 48 sheet pad / 12" x 18" / 45 GSM
 Acid-free / Not sized
Characteristics Thin but strong. Translucent. Absorbent washi sheets take inks, gansai, watercolor, acrylic paints.
Uses Great for sumi-e, calligraphy, ink work, watercolor, lettering, paper crafts, encaustic, rubbing techniques.
Best for Gyotaku (Japanese fish rubbing prints), Orizome (Japanese dip-dyeing)



Name/SKU Shikishi Boards (HY300)
Specs 3 boards: Hosho, Gasen, Torinoko / 5" x 7"
 Only Torinoko board is acid-free / Not sized
Characteristics Washi papers mounted to boards, edged with gold foil. Hosho: smooth, white, absorbent. Gasen: textured, white, absorbent. Torinoko: smooth, yellow, less absorbent.
Uses Traditionally used for sumi-e, watercolor and haiku painting. Can also be used as a substrate for multimedia projects. Boards can be sprayed for colorful backgrounds. Can be repurposed by collaging over old work.
Best for Artwork for display; Japanese-style cards; etegami (Japanese "picture-letter" paintings)



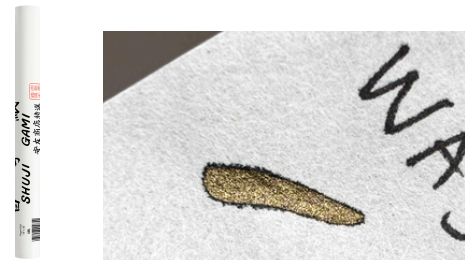
Name/SKU Hosho Paper Roll (6M2)
Specs Roll / 9 1/2" x 20' / 63 GSM
 Acid-free / Not sized
Characteristics Does not shrink or tear easily. Thick, strong, fluffy paper.
Uses Sumi-e, calligraphy, gansai, watercolor, sketching, printing techniques (gel/wood block/lino/printer), cyanotype, gyotaku (Japanese fish printing), orizome (Japanese dip-dyeing), paper crafts
Best for Woodblock printing and projects that require long paper (like blizzard book)



Name/SKU Unryu Roll (6MMU2)
Specs Roll / 11" x 62' / 48 GSM
 Not acid-free / Not sized
Characteristics Unryu "cloud dragon" paper. Long, flowing fibers create an ethereal effect. Lightweight yet durable.
Uses Shoji screens, gansai, sumi-e, gel printing, collage, cardmaking, watercolor, and other paper crafts.
Best for Shoji screens and paper crafts that highlight the beautiful paper fibers



Name/SKU Washi Roll, 11" x 60' (6MMK)
Specs Roll / 11" x 60' / 45 GSM
 Acid-free / Not sized
Characteristics Highly absorbent washi paper in a long roll for large and custom-sized pieces.
Uses Calligraphy, sumi-e, gansai watercolor painting and other paper crafts.
Best for Brush calligraphy and gansai watercolor painting



Name/SKU Washi Roll, 18" x 20' (6ML)
Specs Roll / 18" x 30' / 45 GSM
 Acid-free / Not sized
Characteristics Highly absorbent washi paper in an extra-large roll for large and custom-sized pieces.
Uses Calligraphy, sumi-e, gansai watercolor painting and other paper crafts.
Best for Large scale gansai and sumi-e work paintings, large scale paper crafts

